

MADRID - SHANGAI - HONG KONG - MÉXICO D.F.

The logo consists of three stylized, curved orange shapes that resemble a flame or a stylized letter 'A', positioned above a solid orange circle.  
**ASMAIN**

Su seguro aliado / Your reliable ally



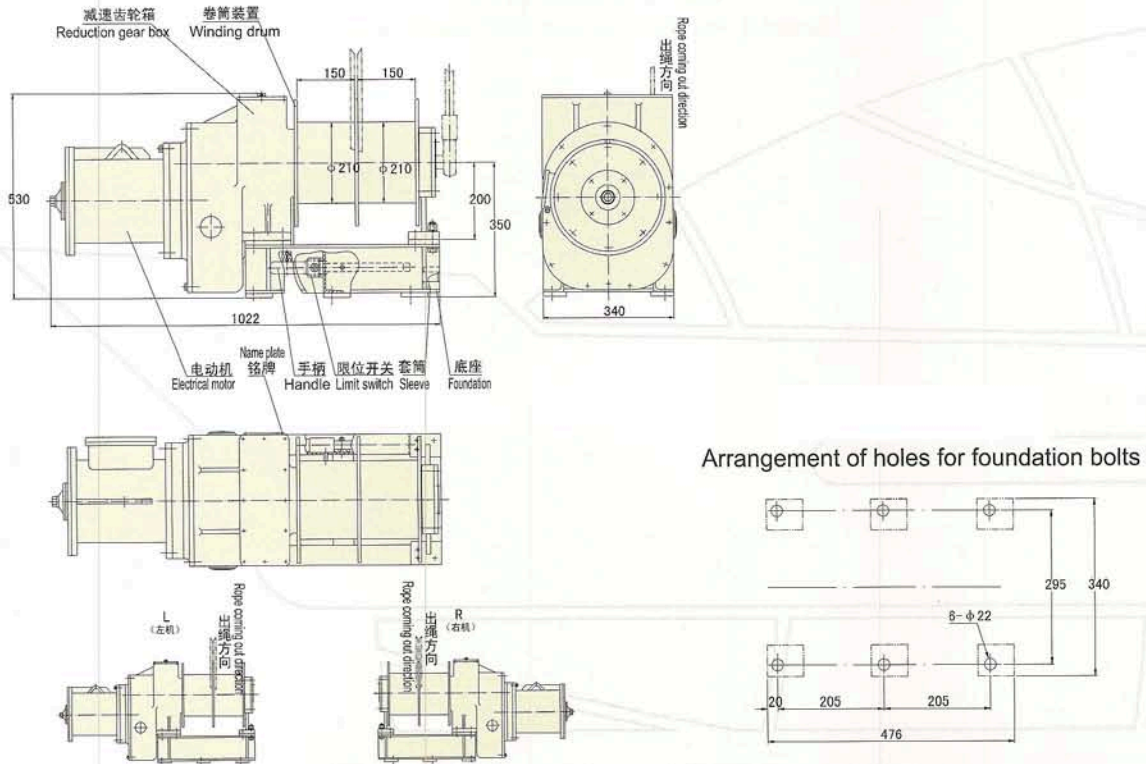
A large, stylized orange logo consisting of three curved shapes and a circle, positioned behind the text.  
**ACCOMODATION, PILOT  
AND OTHER TYPES OF  
LADDERS FOR SHIPS**



# GB/T1392-1985

## Accommodation ladder winch

This product is to be used for lifting and lowering down the accommodation ladder when the ship is mooring, and to be used for steel accommodation ladders of Classes 24, 28 and 32 in combination with Type B ladder turn back gear.



| 型号<br>Model           | 序号<br>NO. | 项目<br>Item                    | 参数<br>Parameter   |       |
|-----------------------|-----------|-------------------------------|---|-------|
| JD2S-08 (10)<br>L (R) | 1         | 最大滚筒负荷<br>Maximum drum load   | 2×5=8 (10)KN  |       |
|                       | 2         | 挂重负荷<br>Hanging load          | 2×15=30KN   |       |
|                       | 3         | 钢索直径<br>Diameter of wire rope | 2-Ø11mm   |       |
|                       | 4         | 钢索型号<br>Model No of wire rope | 6×37-12-170<br>-1-甲/镀-左 同 (GB1102-74)<br>-1- first/galvanized portside, same as (GB1102-74) |       |
|                       | 5         | 滚筒容绳量<br>Drum capacity        | 2×20m   |       |
|                       | 6         | 钢索速度<br>Speed of wire rope    | 9.8m/min  |       |
| JZ2-12H<br>-4T2       | 7         | 电动机<br>Electrical motor       | 功率<br>Power   | 2.2KW |
|                       | 8         |                               | 传动比<br>Transmission ratio   | 1:54  |
|                       | 9         |                               | 重量<br>Weight  | 250kg |

Note: The configuration type and series parameters are from existing products, not in full consistency with the standard.

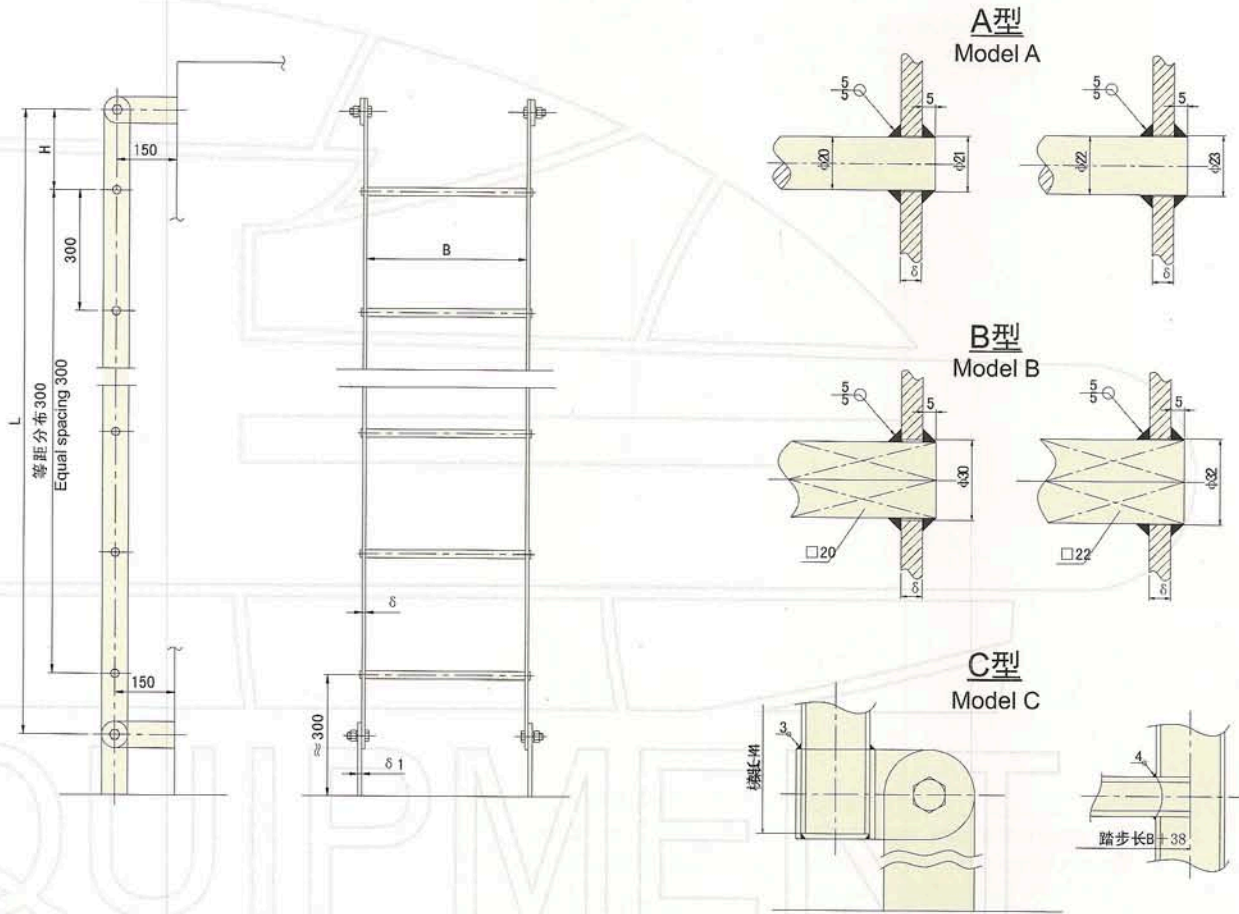
### Example of designation

A starboard type electrical motor driven accommodation-ladder winch with a lifting load of 2×5=10KN shall be designated as:  
Electrical Accommodation-ladder Winch JD2S-10R

# GB/T3892-1983

## Marine steel straight ladder

This product is in compliance with the requirements of Standard ISO3797-76, and to be used on board a ship in compartments, trunks, masts, derrick posts and deckhouse.



| 类型<br>Model | 踏步<br>Step       |                         | B       | L        |
|-------------|------------------|-------------------------|---------|----------|
| A           | $\varnothing 20$ | 圆钢踏步<br>Round bar step  | 300,350 | 600~6000 |
|             | $\varnothing 20$ |                         | 400     |          |
| B           | $\square 20$     | 方钢踏步<br>Square bar step | 300,350 |          |
|             | $\square 20$     |                         | 400     |          |
| C           | $\varnothing 20$ | 钢管踏步<br>Steel pipe step | 300,400 | 600~3600 |

A type A marine use steel vertical ladder in breadth of  $B=300\text{mm}$  and length of  $L=2000\text{mm}$  shall be designated as:

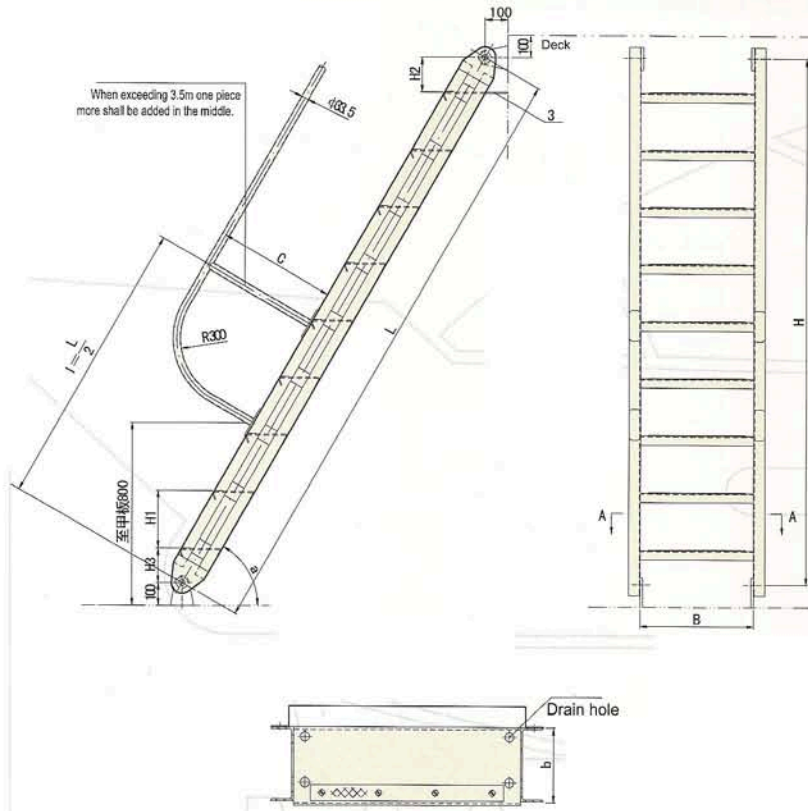
Steel Vertical Ladder : A300×2000 GB3892-83



## GB/T4444-1984

### Marine steel inclined ladder

This product is to be used on board various types of ships on open decks and also in engine rooms, cargo holds or interior spaces.



Note: The diagram shows the structure of Type A inclined ladder, and the Type B is similar to the Type A while changing the ladder frame from angle bars to bulb plates.

| Model | Inclination angle $\alpha$ | Breadth of ladder | Tweendeck height | Length of ladder |
|-------|----------------------------|-------------------|------------------|------------------|
| A     | 45°                        | 700;800           | 400~3500         | 283~4667         |
|       | 50°;55°;60°                | 500;600           | 400~3400         | 261~3916         |
|       |                            | 700;800           | 400~4400         | 261~4961         |
|       | 65°;70°                    | 400;500;600       | 500~3500         | 331~3614         |
| B     | 45°                        | 700;800           | 400~3500         | 283~4667         |
|       | 50°;55°;60°                | 500;600           | 400~3400         | 261~3916         |
|       |                            | 700;800           | 400~4400         | 261~4961         |
|       | 65°;70°                    | 400;500;600       | 500~3500         | 331~3614         |

Example of designation

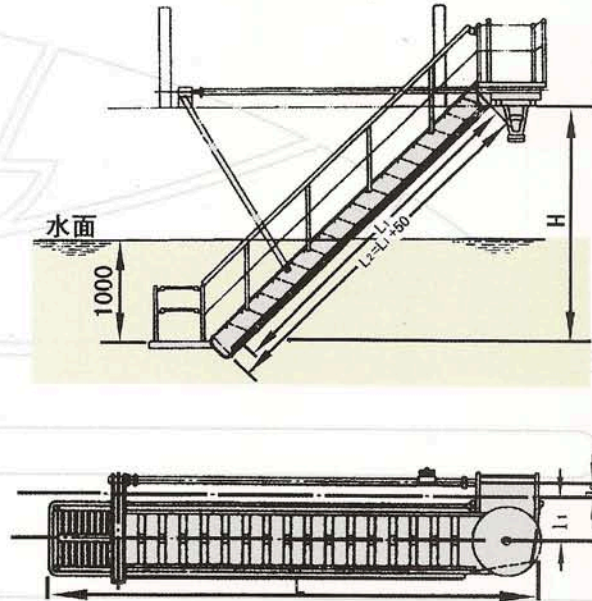
Inclination angle  $\alpha = 60^\circ$  in breadth of  $b=600\text{mm}$  and length of  $l=1044\text{mm}$  shall be designated as:

Steel inclined ladder :  $60^\circ \times 600 \times 1044$  gb/t4444-1984

## GB/T14360-1993

### Aluminum accommodation ladder with fixed curved treads

This product is in conformity with the requirements of Standard ISO5488-1979 and to be applicable to ships of various types as aluminum accommodation ladder with fixed and curved treads.



| 踏步级数<br>No. of treads | 名义尺寸L1<br>Nominal size L1 | 最大选择高度H<br>Maximum selective height | L     | h   | $l_1$  | $l_2$                    | 重量Kg<br>Weight                            |
|-----------------------|---------------------------|-------------------------------------|-------|-----|--|--------------------------|---|
| 12                    | 3600                      | 3600                                | 5290  | 250 | 850<br>900<br>950<br>1000  | 325<br>375<br>425<br>475 | 320                                       |
| 14                    | 4200                      | 4100                                | 5890  | 250 |  |                          | 330                                       |
| 16                    | 4800                      | 4600                                | 6490  | 250 |  |                          | 340                                       |
| 18                    | 5400                      | 5200                                | 7090  | 250 |  |                          | 530                                       |
| 20                    | 6000                      | 5800                                | 7690  | 250 |  |                          | 560                                       |
| 22                    | 6600                      | 6400                                | 8290  | 250 |  |                          | 580                                       |
| 24                    | 7200                      | 6900                                | 8890  | 250 |  |                          | 600                                       |
| 28                    | 8400                      | 7900                                | 10090 | 250 |  |                          | 780                                       |
| 32                    | 9600                      | 8900                                | 11290 | 250 |  |                          | 850                                       |
| 36                    | 10800                     | 9800                                | 12490 | 320 |  |                          | 900 950<br>1000 1050<br>1100 1200<br>1250 |
| 40                    | 12000                     | 10800                               | 13690 | 320 | 970  |                          |   |
| 44                    | 13200                     | 11800                               | 14890 | 350 | 由选用户根<br>据船型确定<br>The user can<br>according to the<br>ship type to confirm | 1180                     |   |
| 48                    | 14400                     | 12800                               | 16090 | 350 |  | 1260                     |   |
| 52                    | 15600                     | 13800                               | 17290 | 420 |  | 1370                     |   |

#### Example of designation

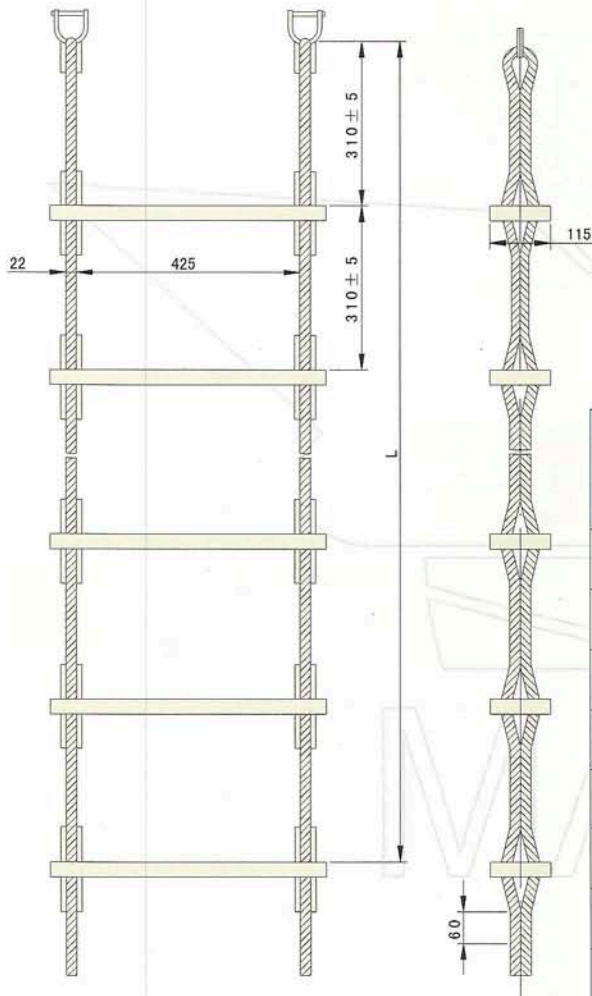
A fixed and curved tread aluminum accommodation ladder of 36 treads with a top platform central distance of  $l_1=900\text{mm}$  shall be designated as:

A steel inclined ladder with a fixed and Curved Tread Aluminum Accommodation Ladder 36-900GB/T14360-1993

## CB/T428-1993

### Embarkation rope ladder

This product is to be used as rope ladder for embarking lifeboat or rafts in emergency case and also for crew's getting in or out the holds.



| 踏板级数<br>No. of treads            | 绳梯长度L<br>Length of<br>rope ladder  | 重量Kg<br>Weight                     |                                      |
|----------------------------------|------------------------------------|------------------------------------|--------------------------------------|
|                                  |                                    | 铝质<br>Aluminum                     | 木质<br>Wood                           |
| 10                               | 3100                               | 25.86                              | 31.56                                |
| 15                               | 4650                               | 33.47                              | 43.92                                |
| 20                               | 6200                               | 41.08                              | 56.27                                |
| 25                               | 7750                               | 48.69                              | 68.64                                |
| 30                               | 9300                               | 56.30                              | 81.00                                |
| 35                               | 10850                              | 63.91                              | 93.36                                |
| 40                               | 12400                              | 71.52                              | 105.72                               |
| 45                               | 13950                              | 79.13                              | 118.08                               |
| 50                               | 15500                              | 86.74                              | 130.44                               |
| 55                               | 17000                              | 94.35                              | 142.86                               |
| 60                               | 18500                              | 101.96                             | 155.16                               |
| 每增加5级踏板<br>To add each<br>5 step | 长度增1500<br>Length increase<br>1500 | 重量增7.61<br>Weight increase<br>7.61 | 重量增12.36<br>Weight increase<br>12.36 |

Note : The length of a rope ladder is the maximum calculated value under the condition that a ship is heeling to an angle of 15°, and to be selected by the designer.

#### Example of designation

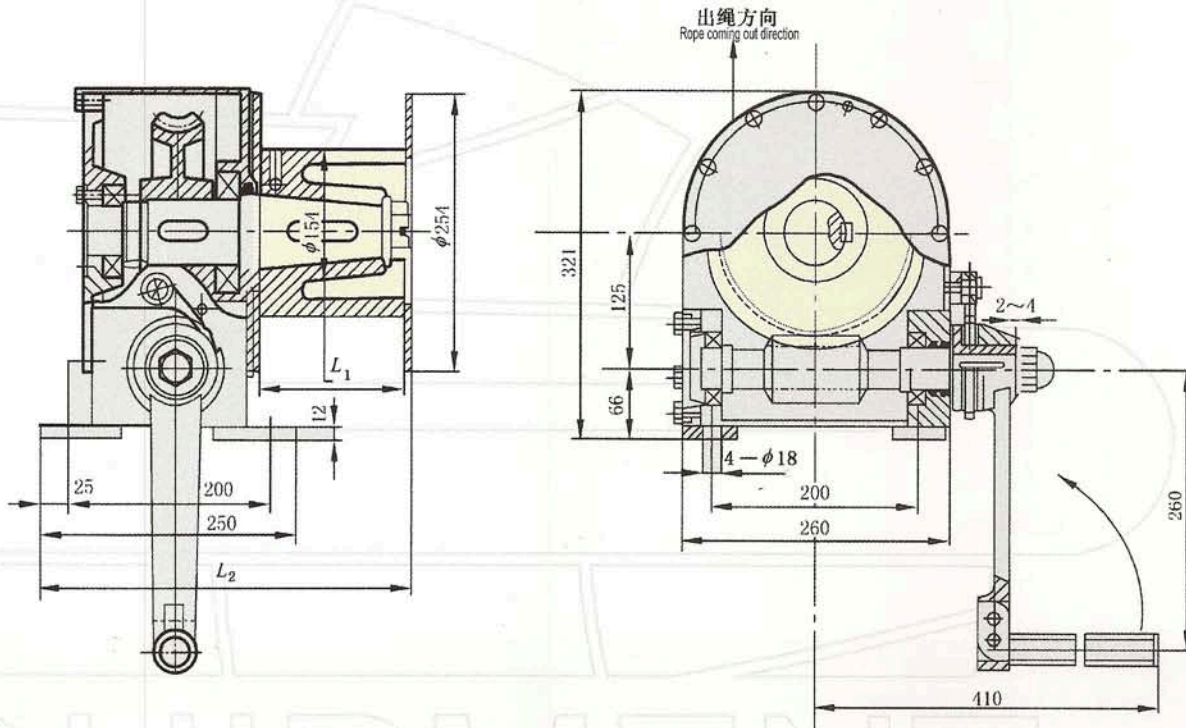
An embarkation rope ladder with 15 aluminum steps shall be designated as:  
Rope Ladder A15 CB/T428-1993



# CB/T434-1998

## Manual accommodation ladder witch

This product is to be used as manual accommodation ladder winch, and also as general use manual hoisting winch.



| 卷筒容绳量<br>Drum capacity<br>m | 钢索直径<br>Diameter of wire rope<br>6×37—155 | L1  | L2  | 重量<br>Weight<br>Kg |
|-----------------------------|---|-----|-----|--------------------|
| 20 (25)                     | 11 (8.7)                                  | 140 | 360 | 66                 |
| 25 (32)                     |   | 175 | 390 | 70                 |
| 30 (39)                     |   | 210 | 420 | 74                 |

Note: The values in the brackets refer to those winches that are not applied to accommodation ladders.

### Example of designation

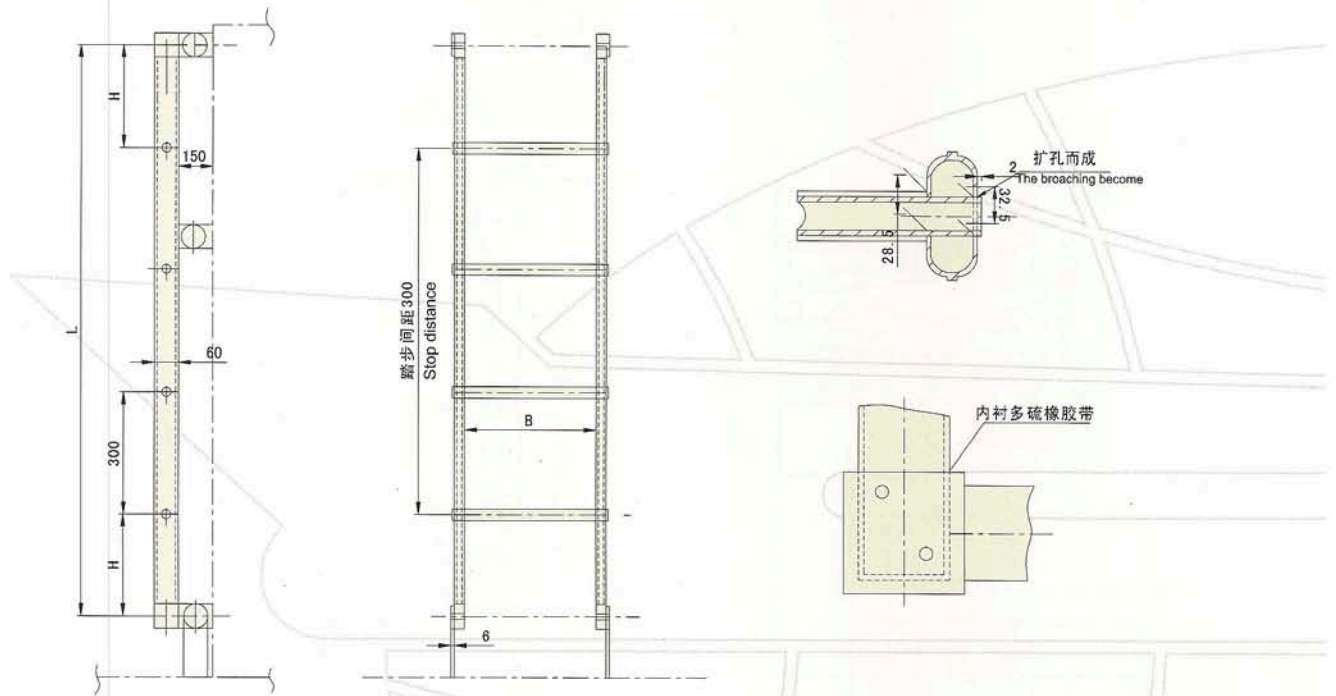
A manual accommodation ladder winch with drum capacity of 20m shall be designated as:  
Manual Accommodation Winch 20 CB/T434-1998



## CB/T670-1994

### Aluminum vertical ladder

This product is applicable to various types of ships in compartments, trunks and deckhouses.



| 踏步级数<br>No. of treads | 甲板层高<br>Floor high of deck | L    | H   | t | 重量 Weight Kg |       |
|-----------------------|----------------------------|------|-----|---|--------------|-------|
|                       |                            |      |     |   | B=325        | B=400 |
| 2                     | 800~1000                   | 600  | 150 | 6 | 3.65         | 3.73  |
| 2                     | 900~1000                   | 800  | 250 | 6 | 4.07         | 4.15  |
| 3                     | 1150~1300                  | 1000 | 200 | 6 | 4.71         | 4.83  |
| 4                     | 1400~1600                  | 1200 | 150 | 6 | 5.34         | 5.5   |
| 4                     | 1500~1600                  | 1400 | 250 | 6 | 5.76         | 5.92  |
| 5                     | 1750~1900                  | 1600 | 200 | 6 | 6.4          | 6.6   |
| 6                     | 2000~2200                  | 1800 | 150 | 6 | 7.03         | 7.27  |
| 6                     | 2100~2200                  | 2000 | 250 | 6 | 7.46         | 7.7   |
| 7                     | 2350~2500                  | 2200 | 200 | 8 | 8.43         | 8.71  |
| 8                     | 2600~2800                  | 2400 | 150 | 8 | 9.06         | 9.38  |
| 8                     | 2700~2800                  | 2600 | 250 | 8 | 9.85         | 10.17 |
| 9                     | 2950~3100                  | 2800 | 200 | 8 | 10.48        | 10.84 |
| 10                    | 3200~3400                  | 3000 | 150 | 8 | 11.11        | 11.51 |
| 10                    | 3300~3400                  | 3200 | 250 | 8 | 11.54        | 11.94 |
| 11                    | 3550~3700                  | 3400 | 200 | 8 | 12.17        | 12.61 |
| 12                    | 3800~4000                  | 3600 | 150 | 8 | 12.8         | 13.28 |

Example of designation

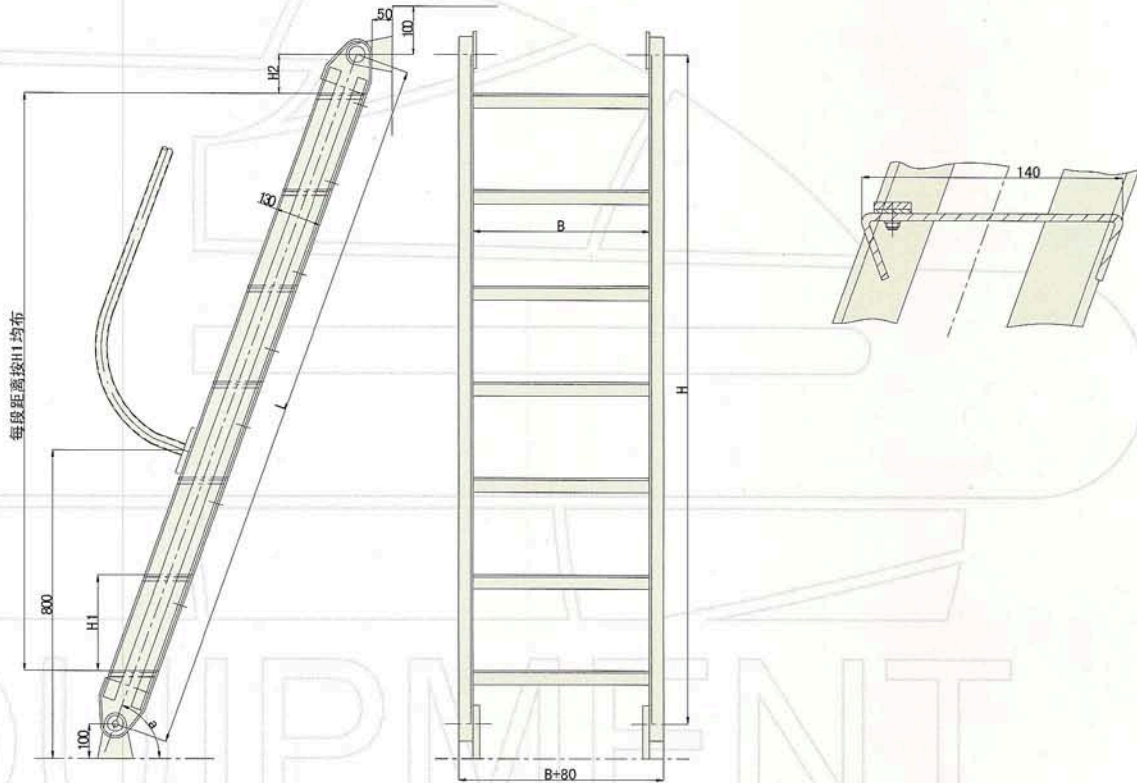
An aluminum-pipe vertical ladder in breadth of B=400mm length of L=1200mm shall be designated as:

Aluminum-pipe Vertical Ladder 400×1200 CB/T670-94.

# CB738-1977

## Aluminum inclined ladder

This product is to be used in cabins or rooms on board naval and merchant ships.



| 斜度<br>Inclination angle<br>$\alpha$ | 梯宽<br>Breadth of ladder<br>B | 踏级步数<br>No. of treads | 梯长<br>Length of ladder<br>L | 梯高 Ladder height |         |        |
|-------------------------------------|------------------------------|-----------------------|-----------------------------|------------------|---------|--------|
|                                     |                              |                       |                             | H                | H1      | H2     |
| 60°                                 | 500;600                      | 3~10                  | 800~3000                    | 700~2800         | 240~260 | 83~130 |
| 65°                                 |                              |                       |                             |                  |         |        |
| 70°                                 |                              |                       |                             |                  |         |        |

### Example of designation

An aluminum inclined ladder with a inclination angle of 60°, in breadth of B=600mm and length of L=2000mm shall be designated as:

Aluminum Inclined Ladder 60°×600×2000 CB/T738-1977

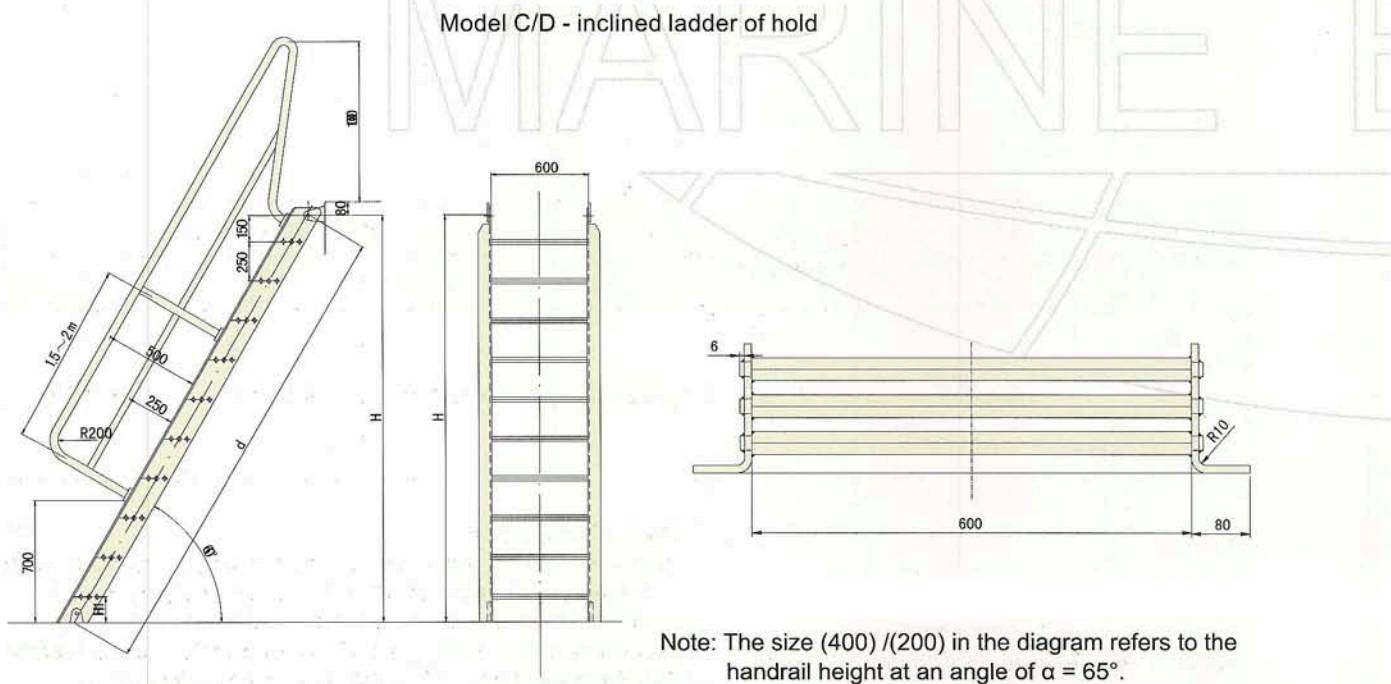
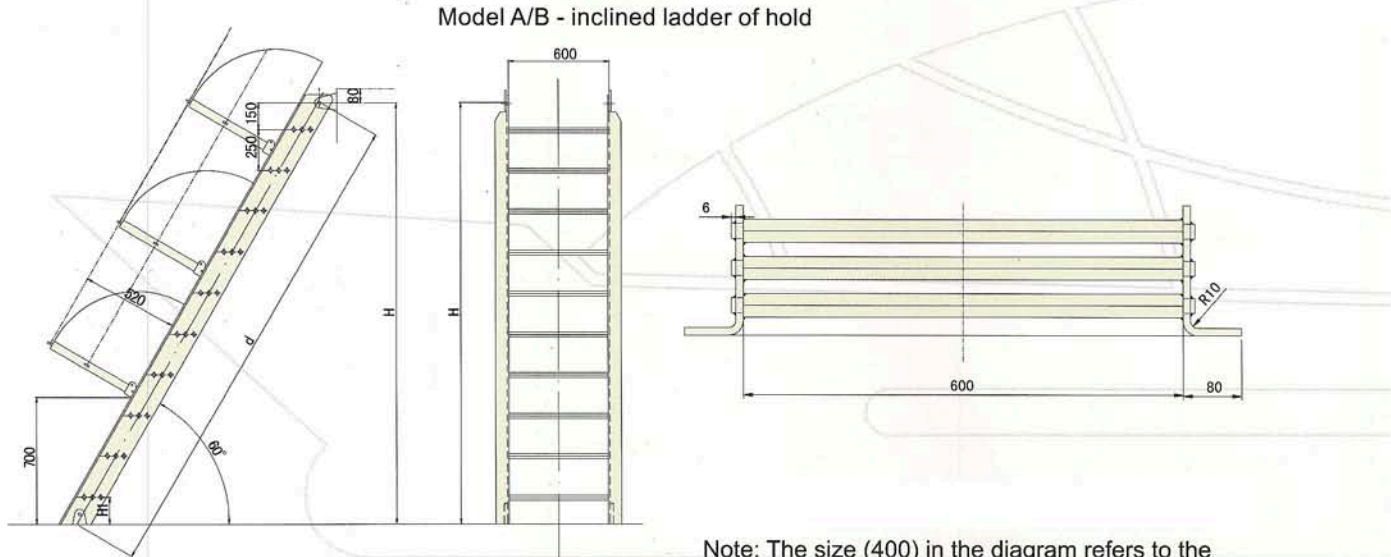
An aluminum inclined ladder with a inclination angle of 65°, in breadth of B=500mm and length of L=1800mm shall be designated as:

Aluminum Inclined Ladder 65°×500×1800 CB/T738-1977

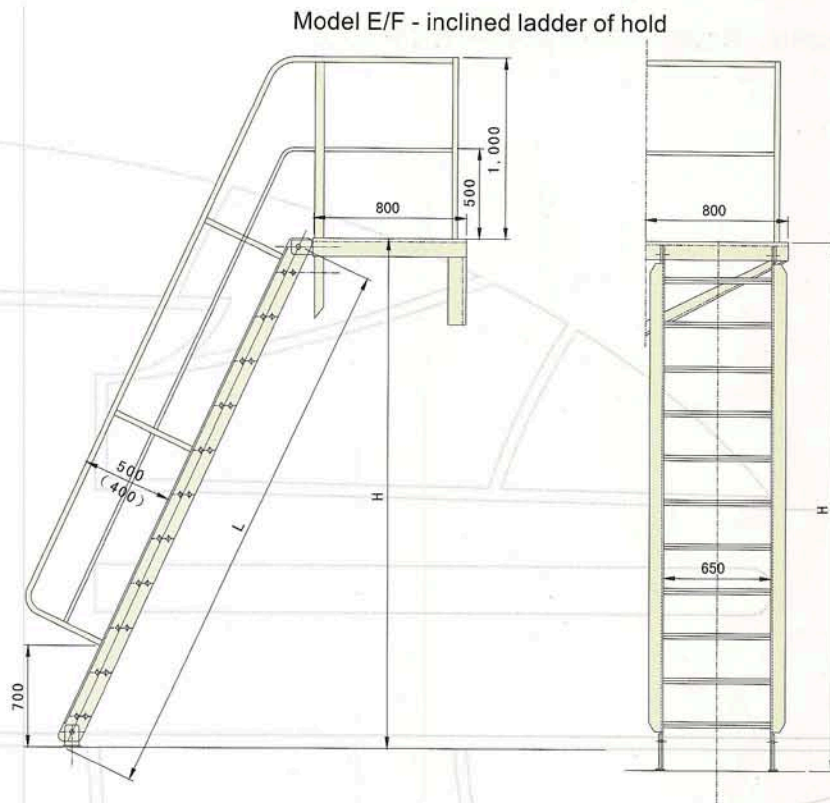
## CB\*801-1985

### Inclined ladder of hold

This product is in conformity with the requirements of Australia dock-man regulations, and to be used in cargo holds of ships with gross tonnage of 300t and above







Note: The size (420) in the diagram refers to the handrail height at an angle of  $\alpha = 65^\circ$ .

| 型号<br>Model | 名称<br>Name   | 斜度 $\alpha$<br>Inclination angle | 梯宽 B<br>Breadth of ladder | 梯高 H<br>Ladder height | 用途<br>Purpose              |
|-------------|--|----------------------------------|---------------------------|-----------------------|----------------------------|
| A           | 左活动扶手货舱斜梯<br>Cargo hold inclined ladder with left detachable handrail  | 60°<br>~<br>65°                  | 600                       | 2500~6700             | 通用货舱<br>General cargo hold |
| B           | 右活动扶手货舱斜梯<br>Cargo hold inclined ladder with right detachable handrail |                                  |                           |                       |                            |
| C           | 左固定扶手货舱斜梯<br>Cargo hold inclined ladder with left fixed handrail       |                                  |                           |                       |                            |
| D           | 右固定扶手货舱斜梯<br>Cargo hold inclined ladder with right fixed handrail      |                                  |                           |                       |                            |
| E           | 左固定扶手货舱斜梯<br>Cargo hold inclined ladder with left fixed handrail       |                                  |                           |                       |                            |
| F           | 右固定扶手货舱斜梯<br>Cargo hold inclined ladder with right fixed handrail      |                                  | 650                       | 2500~6750             | 散装货舱<br>Bulk cargo hold    |

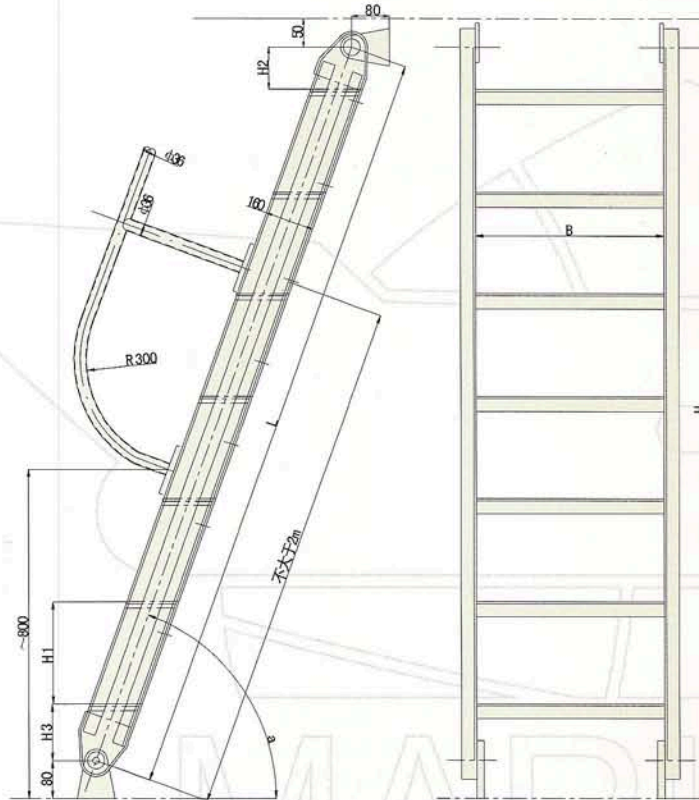
Example of designation

An inclined cargo hold ladder with a height of 5200mm,  $\alpha = 65^\circ$  and left hand side detachable handrail at the left hand side shall be designated as:

Cargo-hold Inclined Ladder A65-5200 CB\*801-1985

## CB/T833-1998

### Inclined ladder of engine room



Note: Type A and Type B ladder frames are to be made of flat bars; Type C and Type D ladder frames are to be made of angle bars.

| 型号<br>Model | 梯架<br>Ladder frame | 踏步<br>Tread            | 斜度 $\alpha^\circ$<br>Inclination angle | 梯度B<br>Slope | 梯高H<br>Ladder height |
|-------------|--------------------|------------------------|--|--------------|----------------------|
| A           | 扁钢<br>Flat bar     | 花钢板<br>Checkered plate | 55°                                    | 450          | 750~2850             |
| B           |                    | 钢板网<br>Expanded plate  |  |              |                      |
| C           | 角钢<br>Angle bar    | 花钢板<br>Checkered plate | 60°                                    | 600          | 3000~4050            |
| D           |                    | 钢板网<br>Expanded plate  |  |              |                      |

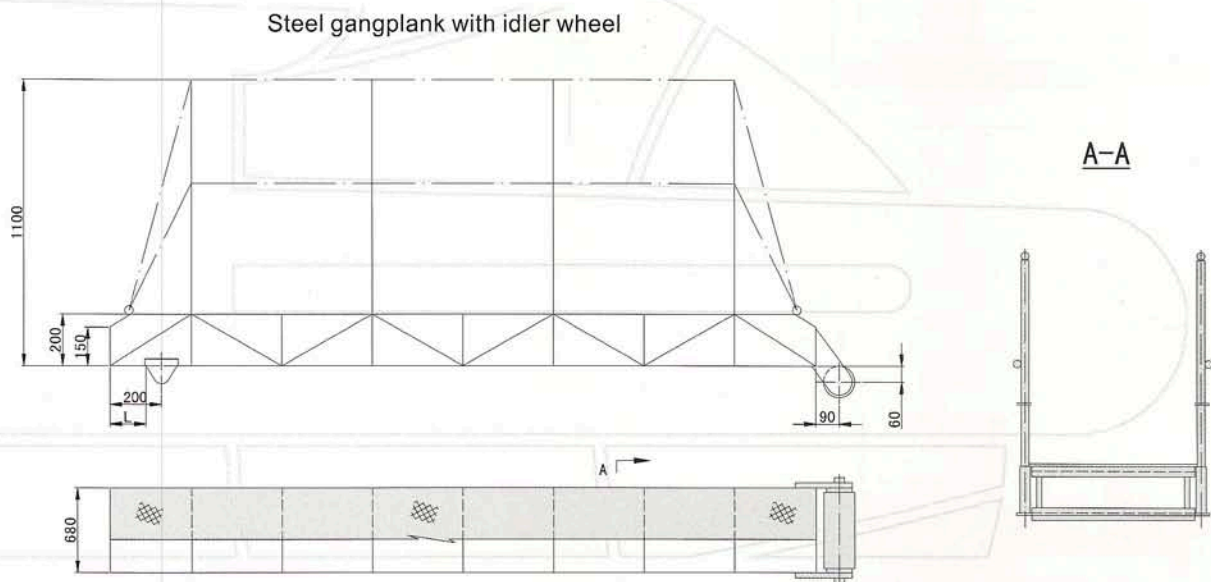
#### Example of designation

An engine room inclined ladder of Type A with a inclination angle of 60°, in breadth of B=600mm and height of H=2400mm shall be designated as:  
Engine-room Inclined Ladder A 60-600×2400 CB\*833-87

# CB971-1981

## Steel gangplank with idler wheel

This product is to be used for embarkation or disembarkation of personnel when various types of ships are mooring alongside a wharf.



| 型号<br>Model | 跳板长度L<br>Length of gangplank | 重量kg<br>Weight |
|-------------|------------------------------|----------------|
| CT1         | 4000                         | 113            |
| CT2         | 6000                         | 169            |

### Example of designation

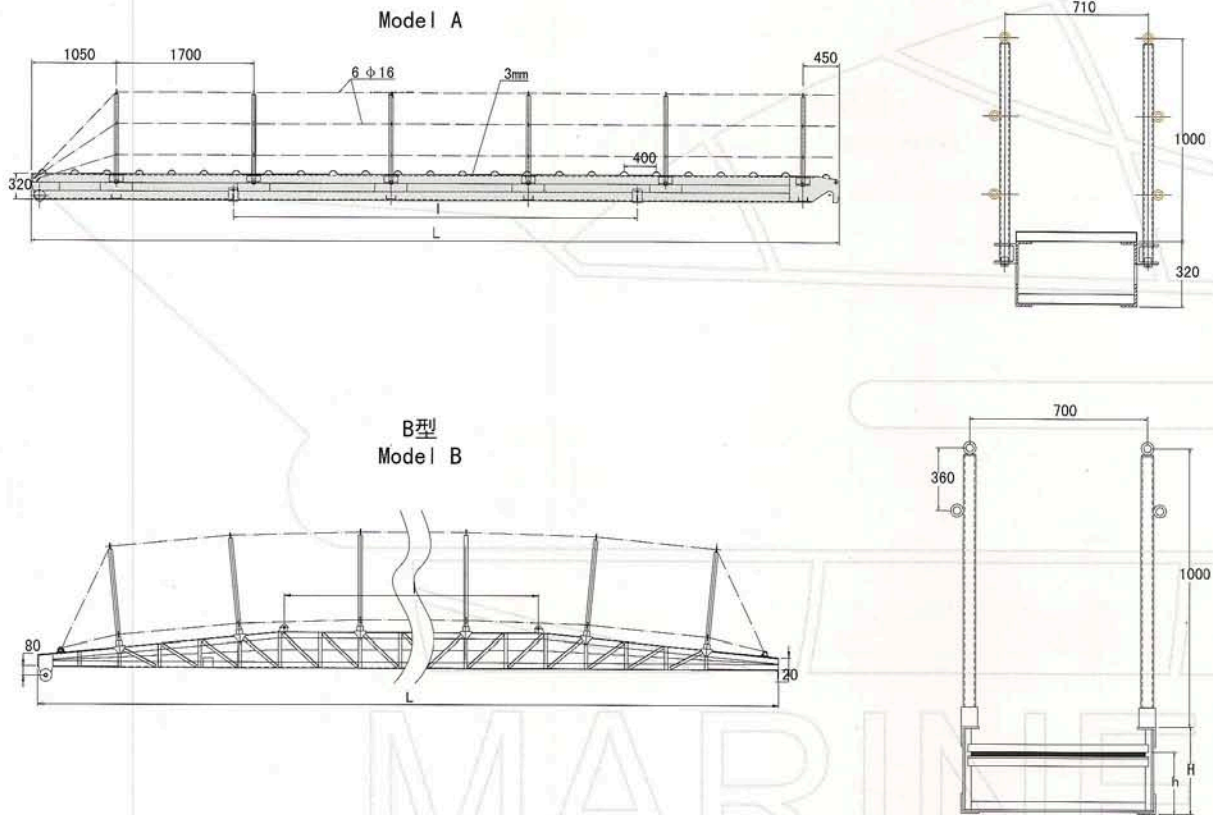
A steel gangplank with idler wheels and in a length of 6000mm shall be designated as:  
Steel Gangplank with Idler Wheels GT2CB971-81



# CB\*3116-1982

## Aluminum gangplank

This product is to be used for embarkation or disembarkation of personnel when various types of ships are mooring alongside a wharf. It meets the requirements of Standard JIS F2613-1976.



| Model      | Main size |                |                |      |     |     | kg Weight |         |
|------------|-----------|----------------|----------------|------|-----|-----|-----------|---------|
|            | L         | L <sub>1</sub> | L <sub>2</sub> | l    | H   | h   | Model A   | Model B |
| A (B) 8    | 8000      | 4000           | 4000           | 3200 | 350 | 180 | 182       | 205     |
| A (B) 10   | 10000     | 5000           | 5000           | 4830 | 500 | 250 | 221       | 244     |
| A (B) 12.5 | 12500     | 6250           | 6250           | 4830 | 550 | 300 | 296       | 319     |
| A (B) 15   | 15000     | 7500           | 7500           | 7230 | 750 | 500 | 362       | 388     |

### Example of designation

An aluminum gangplank of Type A and in a length of 8000mm shall be designated as:  
Aluminum Gangplank A8CB\*3116-82

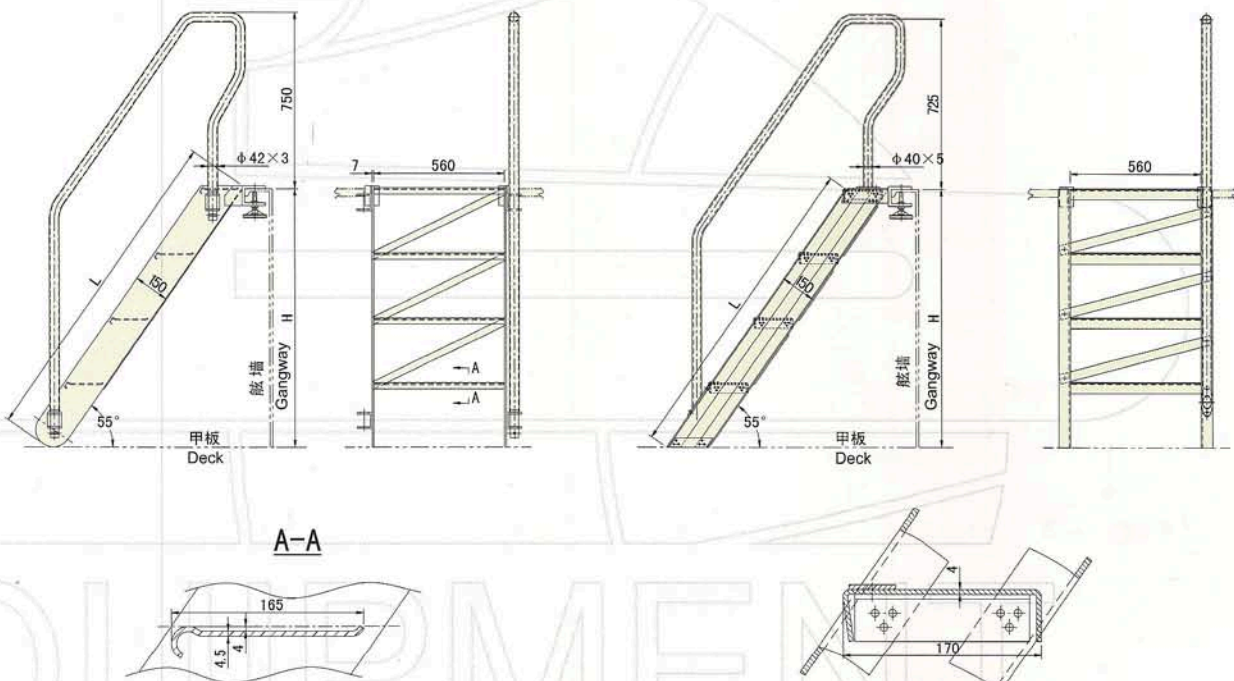
CB\*3122-1982

Gangway ladder

This product is to be used for the screw to go over the bulwark and in compliance with the requirement of Standard JIS F2614-1967.

Type A steel bulwark ladder

Type B aluminum bulwark ladder



| 形式<br>Model | 名称<br>Name                       | H    | L    | 重量kg<br>Weight |
|-------------|----------------------------------|------|------|----------------|
| A           | 钢质舷墙梯<br>Steel bulwark ladder    | 1100 | 1320 | 55             |
|             |                                  | 1200 | 1450 | 57             |
| B           | 铝质舷墙梯<br>Aluminum bulwark ladder | 1100 | 1340 | 28             |
|             |                                  | 1200 | 1470 | 29             |

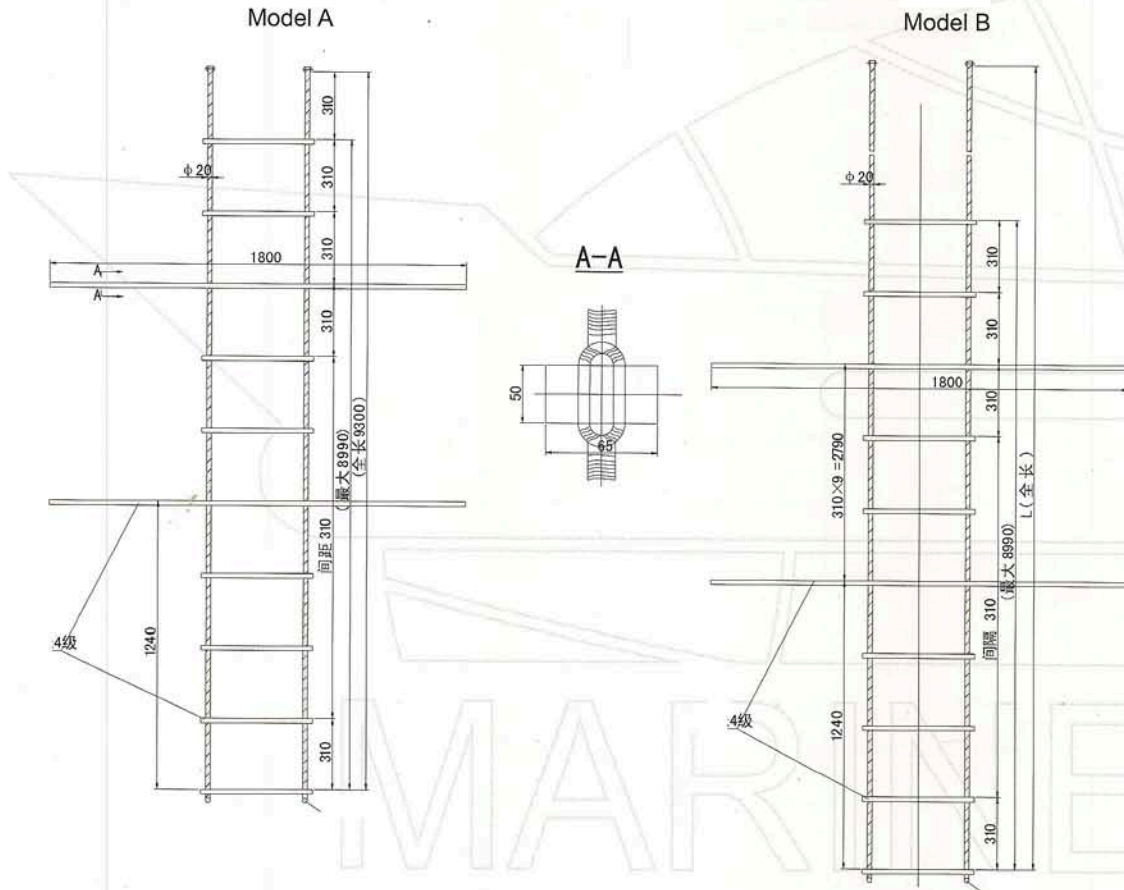
Example of designation

A steel ladder for a bulwark of 1100mm in height:  
Steel bulwark ladder A1100 CB\*3122-1982

# CB/T3142-1994

## Jack ladder for pilot

This product is to be used for the pilot to embark or disembark a ship and in compliance with the requirements of SOLAS 1974, Standards ISO/R799-1968 and JISF2615-1982.



| 型号<br>Model | L                               | l    | 踏板级数<br>No. of steps | 止扭板数<br>No. of twist prevention boards | 重量kg<br>Weight              |
|-------------|---------------------------------|------|----------------------|--|-----------------------------|
| A           | 2170                            | 1860 | 7                    | 1                                      | 31.6                        |
|             | 4960                            | 4650 | 16                   | 2                                      | 55.3                        |
|             | 7750                            | 7440 | 25                   | 3                                      | 79.0                        |
|             | 9300                            | 8990 | 30                   | 3                                      | 88.65                       |
| B           | 订货主决定<br>To be decided by order | 8990 | 30                   | 3                                      | 见施工图<br>See working drawing |

Example of designation

Type A pilot ladder in a length of 7750mm:

Pilot Ladder A7750 CB/T3142-1994



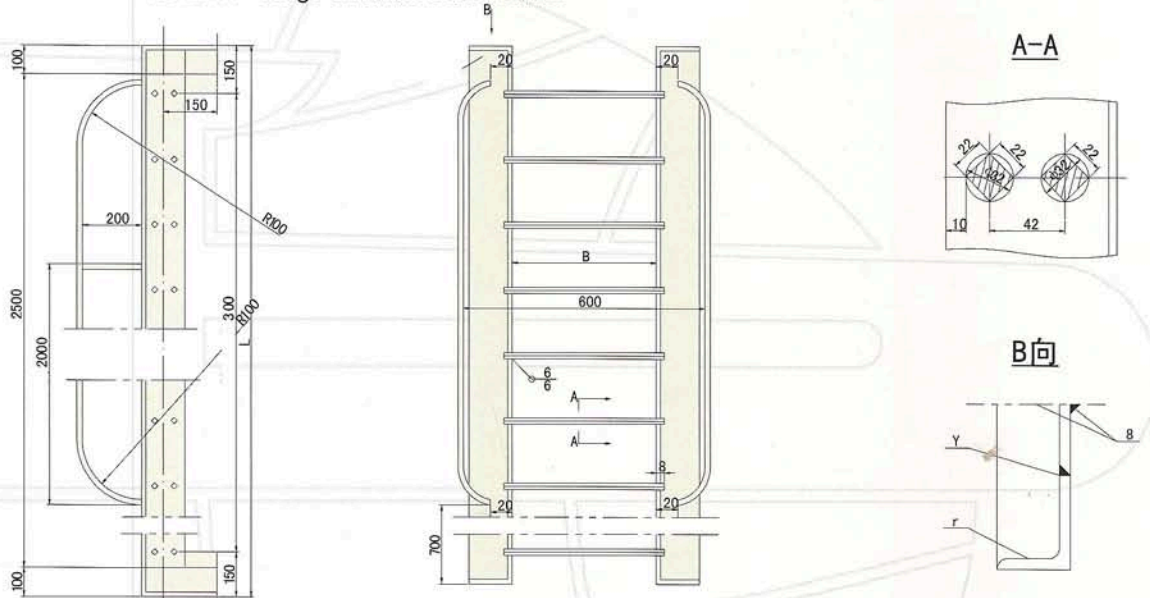
# CB\*3218-1984

## Cargo oil tank vertical ladder

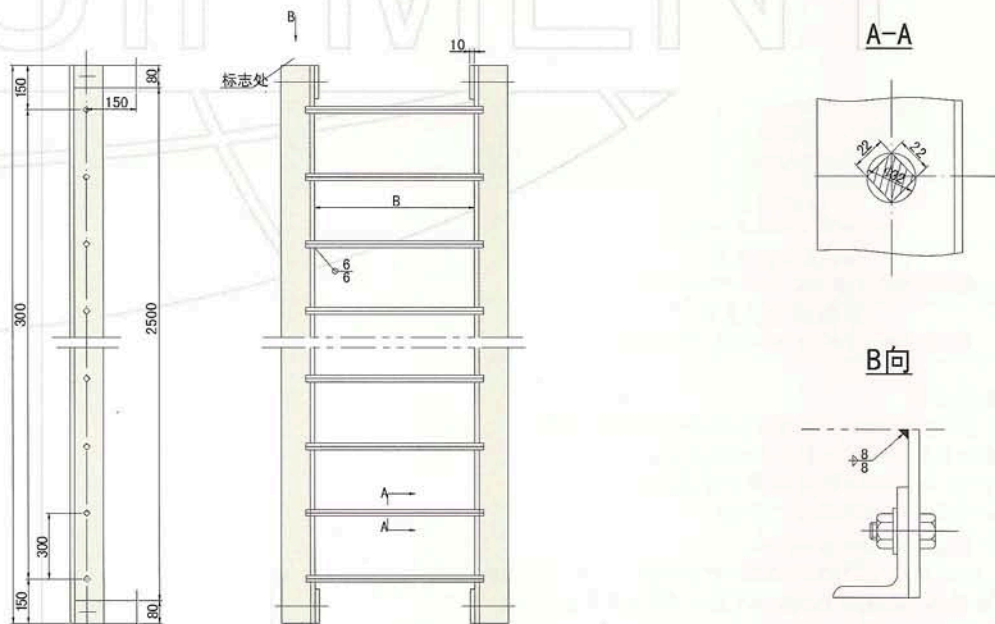
This product is to be used in cargo holds or oil tanks of ships and in compliance with the requirements of NSC and Australia Wharf-men regulations.

This product meets the requirements of standards ISO3797-1976 and JIS F2602-1978.

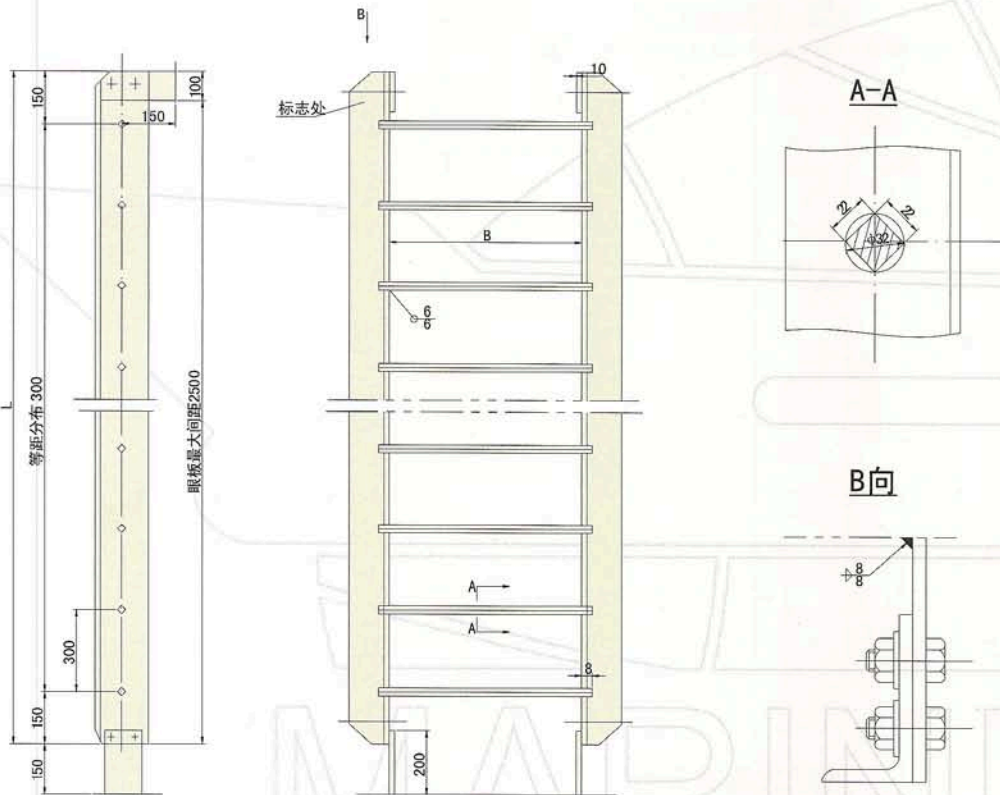
Model A - Cargo oil tank vertical ladder



Model B - Cargo oil tank vertical ladder



Model C - Cargo oil tank vertical ladder



| 类型<br>Model | 名称<br>Name                                       | 梯架材料规格<br>Material and size of<br>the ladder frame | 梯宽B<br>Breadth of ladder | 梯长L<br>Length of ladder |
|-------------|--|--|--------------------------|-------------------------|
| A           | 油舱直梯<br>Oil tank vertical ladder                 | L100×800×10  | 300; 400                 | 1200~6000               |
| B           | 角钢货舱直梯<br>Angle-steel cargo hold vertical ladder | L80×50×8   | 300; 400                 | 1200~6000               |
| C           | 球扁钢货舱直梯<br>Bulb-plate cargo hold vertical ladder | L140×35×9  | 400                      | 2100~6000               |

Example of designation:

Cargo tank vertical ladder in length of L=1500mm and width of B=400mm:

Oil tank vertical ladder A1500×400CB\*3218-84

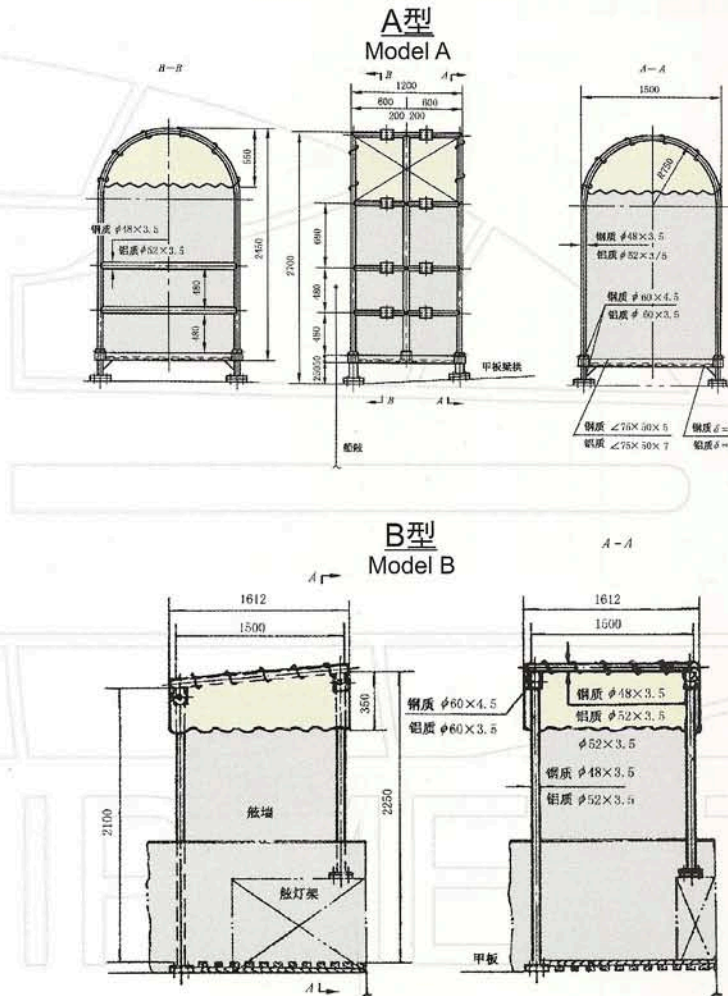
Bulb-plate cargo hold vertical ladder in length of L=5400mm:

Cargo hold vertical hold C5400 CB\*3218-84

# CB/T3560-1993

## Pilot platform of the Panama Canal

This product is applicable to ships that can pass through the Panama Canal.



| 型式<br>Model | 名称<br>Name   | 材质代号<br>Code NO. of material |               | 重量Kg<br>Weight |               |
|-------------|--|------------------------------|---------------|----------------|---------------|
|             |  | 钢<br>Steel                   | 铝<br>Aluminum | 钢<br>Steel     | 铝<br>Aluminum |
| A           | 甲板两舷巴拿马平台<br>Panama platform on deck (port and starboard)      | G                            | L             | 210            | 106           |
| B           | 驾驶室两舷巴拿马平台<br>Wheel house Panama platform (port and starboard) | G                            | L             | 85             | 41            |

Example of designation:

Steel panama platform on deck (port and starboard):

Platform AG CB/T3560-1993

Aluminum wheel house panama platform (port and starboard):

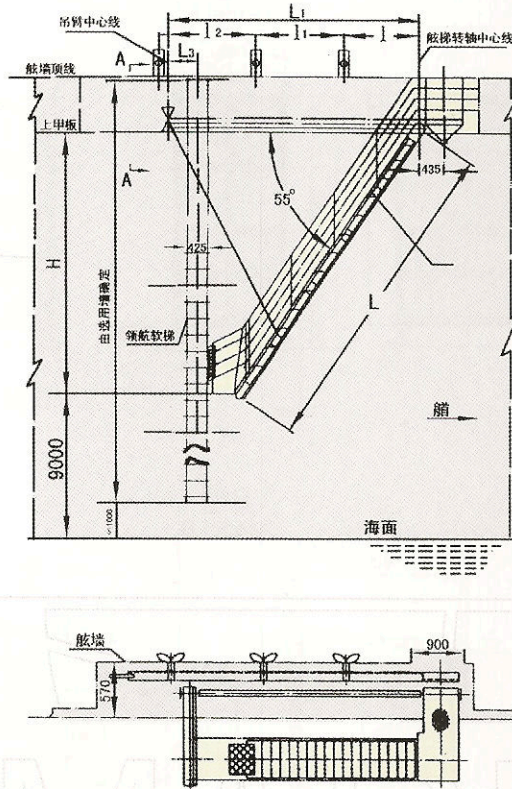
Platform BL CB/T3560-1993



## CB/T3561-1993

### Accommodation ladder fitting of pilot

This product is used as pilot boarding ladder for various types of ships when the distance from the sea level to the embarking port is within the range of 9m to 15m.



| 踏步级数<br>No. of steps | L    | L <sub>1</sub> | H    | l    | l <sub>1</sub> | l <sub>2</sub> | l <sub>3</sub> | 重量 kg<br>Weight |
|----------------------|------|----------------|------|------|----------------|----------------|----------------|-----------------|
| 12                   | 3600 | 3270           | 2900 | 700  | 2100           | -              | ~390           | 283             |
| 14                   | 4200 | 3600           | 3400 | 1000 | 2300           | -              | ~380           | 295             |
| 16                   | 4800 | 3900           | 3900 | 1000 | 2600           | -              | ~330           | 314             |
| 18                   | 5400 | 4350           | 4400 | 1000 | 3000           | -              | ~440           | 324             |
| 20                   | 6000 | 4650           | 4900 | 1000 | 2100           | 2100           | ~395           | 369             |
| 22                   | 6600 | 5250           | 5400 | 1000 | 2400           | 2400           | ~650           | 385             |
| 24                   | 7200 | 5850           | 5900 | 1000 | 2700           | 2700           | ~910           | 404             |
| 26                   | 7800 | 6450           | 6400 | 1000 | 3000           | 3000           | ~1160          | 425             |

Example of designation

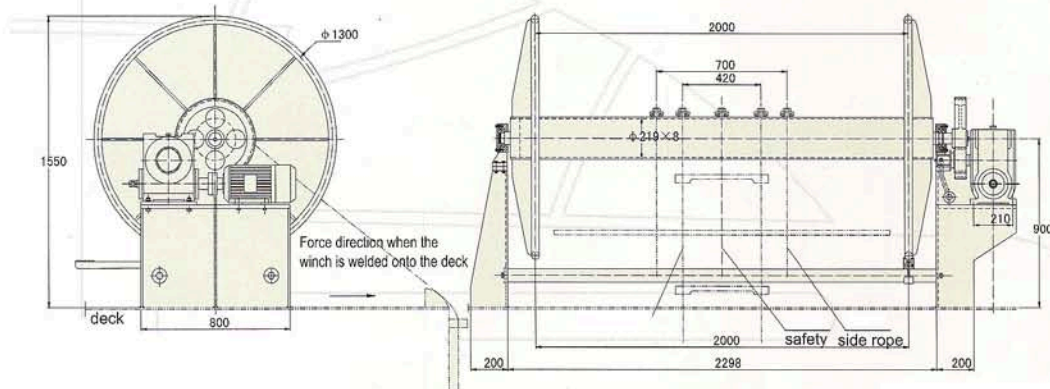
A pilot ladder with 12 steps shall be designated as:  
Pilot Ladder 12 CB/T3561-1993

## CB/T3727-1995

### Flexible ladder fitting of pilot

This product is used as a hoisting and storage winch for the pilot ladder.

Model B - Electric flexible ladder



| Type of winch | Average speed of drum<br>m/min | Maximum capacity<br>m | Model and parameters              |  |                           |                           |  | Kg<br>Weight                |     |
|---------------|--------------------------------|-----------------------|-----------------------------------|--|---------------------------|---------------------------|--|-----------------------------|-----|
| A             | 24                             | 30                    | JFH $\frac{1}{24}$ Type Air Winch |  |                           |                           |  | 492                         |     |
|               |                                |                       | Pressure of compressed air<br>Mpa | Consumption of compressed air<br>m <sup>3</sup> /min | Rated revolution<br>r/min | Rated power<br>KW         | Maximum pulling force<br>KN              |                             |     |
|               |                                |                       | 0.6                               | 4.5~5.0  | 890                       | 3.98                      | 10                                       |                             |     |
| B             | 26                             | 30                    | JZ2-12H-4T2 type electric motor   |  |                           |                           | Transmission ratio of reduction gear box | Maximum pulling force<br>KN | 575 |
|               |                                |                       | Rated revolution<br>r/min         | Power<br>KW  | Rated current<br>A        | Voltage/frequency<br>V/Hz | 1:77                                     | 10                          |     |
|               |                                |                       | 1350                              | 2.2  | 6                         | 380/50                    |  |                             |     |

#### Example of designation

A starboard type air winch for rope ladder shall be designated as:  
Rope-ladder Winch AY CB/T 3727-1995

A portside type air winch for rope ladder shall be designated as:  
Rope-ladder Winch BZ CB/T 3727-1995





# **Su seguro aliado**

# **Your reliable ally**



**De la Pinilla, 91  
28023 Madrid – SPAIN  
Tel. +34 617 481 349  
Fax +34 913 079 421  
asmain@asmain.com  
www.asmain.com**